

VALENCE

INFRACON

True Turnkey Solutions For Your Infrastructure Needs

+91 7798118041

www.valenceinfra.com

amey@valenceinfra.com

○ Experienced Team

- Motivated team with past experience of project execution of more than 95 projects
- Experienced & skilled manpower to execute complex projects
- Phase-wise project plan to match decided timelines
- Involvement in project right from Day1

Ongoing projects : 7

Projects in pipeline : 4

Team size : 7

Contract labours : 40

○ Dedicated team member for each project

- Single point contact
- Regular project update
- Quick communication without any timelag
- Easy Coordination

○ Strong and Dependable Manufacturing back end support

- Dedicated back-end team for supplies
- Flexibility to choose supply location
- Help to optimize the project w.r.t Cost, Quality & timelines

Consolidated per month capacity of 4 plants : 480 MT

All projects completed as per mutually decided timelines during the last year.

○ Torch Bearers - Execution team

- Last but important part of value chain
- Skilled and Experienced team helps maintain the required quality
- Important to match decided timelines
- Correct procedures, Quick communication, Skilled team result in long lasting, Strong and Aesthetically appealing buildings.

What we do ?

- ✓ **True Turnkey solutions** for all types of Pre-Engineered Buildings including Civil Work and Steel Super Structure.
- ✓ **Roofing and Cladding Solutions** - Site measurements, Estimations, Supply & Installations
- ✓ **Primary Structures** – Column & Rafters, Portals, Bracings etc.
Design, Estimations, Supply & Installations
- ✓ **Secondary Structures** – Roof Purlins, Wall Girts, etc.
Design, Estimations, Supply & Installations
- ✓ **Retrofitting of Existing structures, Structural Maintenance & Strengthening**
Checking & Analysis, Estimations, Supply, Onsite modifications & Installations.
- ✓ **Accessories** – Turbo Vents, Ridge Vents, Louvers, Sky Lights, Fasteners, etc.
- ✓ **Complete Project Management Services**

Pre-Engineered Buildings :

- **Industrial Buildings**
- **Warehousing**
- **Cold Storages**
- **Showrooms**
- **Site Offices & Cabins**

With in-house manufacturing and on site quick installation, Pre-Engineered Buildings has been first choice for the industry.

Due to simultaneous activities of site civil work and super structure manufacturing in plant, aggressive timelines are achievable with precise planning.

- **Farmhouses**
- **Parking & Garages**
- **Agricultural Structures & Godowns**

Lately changing customer requirements and acceptance towards modular and ready to move-in Housing, easy to customize PEBs becoming popular in Farmhouse construction.

Cost effective and optimized PEB designs finding their application in Agriculture infrastructure.

On-going Projects

- **Project VI20240208**

Location – Vilholi, Nashik
Factory Building - 331800 Sq ft
1200 MT

- **HB Realty**

Location – Dindori, Nashik
Factory Building G+1 - 84098 Sq ft
292 MT

- **A&A Industries**

Location – Dindori, Nashik
Factory Building - 7400 Sq ft
35 MT

Total 6 on-going projects

Area – 513213 sq ft

1862 MT

Estimated Value – Rs. 19.5 Crore

- **Swapnil Feeds Pvt Ltd**

Location – Deola, Nashik
Warehouse Building - 67950 Sq ft
235 MT

- **Project VI20230922**

Location – Ambad, Nashik
Factory Building - 11370 Sq ft
57.1 MT

- **Project VI20240101**

Location – Adgaon, Nashik
Factory Building - 10595 Sq ft
43 MT

Total 6 projects in pipeline

Area – 178000 sq ft

555 MT

Estimated Value – Rs. 6.1 Crore

PROJECT PORTFOLIO

Project – 1



- Location – Rajur, Nashik
- Factory space
- 121000 sq ft
- 388 MT

Project – 1



- **Location – Rajur, Nashik**
- **Factory space**
- **121000 sq ft**
- **388 MT**

Project – 1



- **Location – Rajur, Nashik**
- **Factory space**
- **121000 sq ft**
- **388 MT**

Project – 1



- **Location – Rajur, Nashik**
- **Factory space**
- **121000 sq ft**
- **388 MT**

Project – 2



- **Location – Janori, Nashik**
- **Factory space**
- **98352 sq ft**
- **490 MT**

Project – 2



- Location – Janori, Nashik
- Factory space
- 98352 sq ft
- 490 MT

Project – 2



- **Location – Janori, Nashik**
- **Factory space**
- **98352 sq ft**
- **490 MT**

Project – 3



- Location – Vilholi, Nashik
- factory space & G+1 office space
- 57218 sq ft
- 180 MT

Project – 3



- **Location – Vilholi, Nashik**
- **factory space & G+1 office space**
- **57218 sq ft**
- **180 MT**

Project – 3



- Location – Vilholi, Nashik
- factory space & G+1 office space
- 57218 sq ft
- 180 MT

Project – 4



- **Location – Dindori, Nashik**
- **Phase 1 factory space**
- **27825 sq ft**
- **108 MT**

Project – 4



- **Location – Dindori, Nashik**
- **Phase 1 factory space**
- **27825 sq ft**
- **108 MT**

Project – 4



- **Location – Dindori, Nashik**
- **Phase 1 factory space**
- **27825 sq ft**
- **108 MT**

Project – 5



- **Location – Ambebahula, Nashik**
- **Factory space**
- **20085 sq ft**
- **54 MT**

Project – 5



- **Location – Ambebahula, Nashik**
- **Factory space – 20085 sq ft**
- **54 MT**

Project – 5



- Location – Ambebahula, Nashik
- Factory space – 20085 sq ft
- 54 MT

Project – 6



- **Location – Ajang, Malegaon**
- **Factory space**
- **27220 sq ft**
- **85 MT**

Project – 6



- **Location – Ajang, Malegaon**
- **Factory space**
- **27220 sq ft**
- **85 MT**

Project – 6



- Location – Ajang, Malegaon
- Factory space
- 27220 sq ft
- 85 MT

Project – 7



- **Location –**
Ranjangaon, Pune
- **G+1 factory space &**
G+3 office space
- **13560 sq ft**
- **95 MT**

Project – 7



- **Location –**
Ranjangaon, Pune
- **G+1 factory space**
& G+3 office
space 13560 sq ft
- **95 MT**

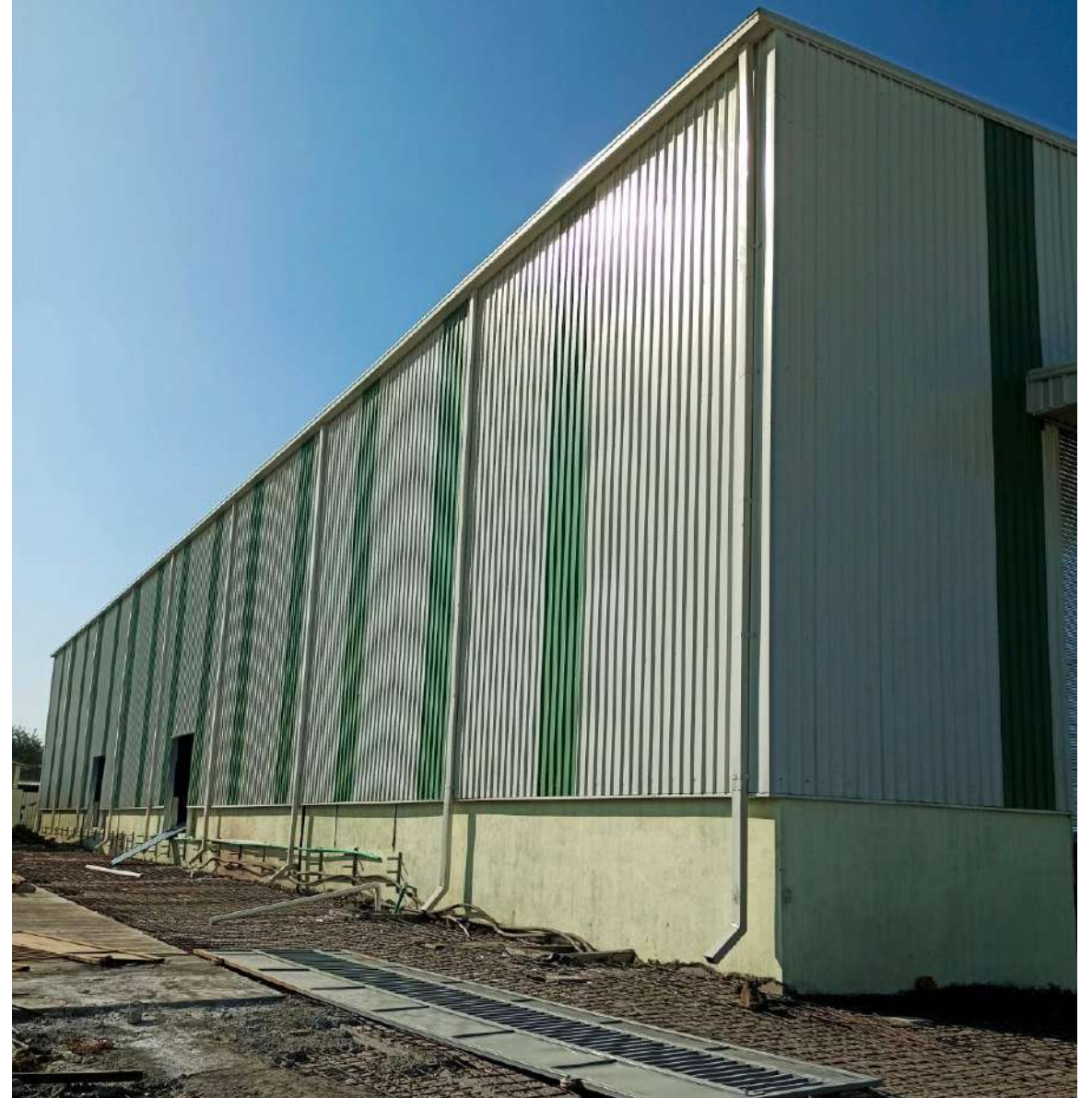


Project – 7



- Location –
Ranjangaon, Pune
- G+1 factory space &
G+3 office space
13560 sq ft
- 95 MT

Project – 8



- **Location – Nashik**
- **Factory Building**
- **5 MT crane**
- **10160 sq ft**
- **55 MT**

Project – 8



- **Location – Nashik**
- **Factory Building**
- **5 MT crane**
- **10160 sq ft**
- **55 MT**

Project – 8



- **Location – Nashik**
- **Factory Building**
- **5 MT crane**
- **10160 sq ft**
- **55 MT**

Project – 9



- **Location – Nashik**
- **Factory Building**
- **5 MT crane**
- **12540 sq ft**
- **88 MT**

Project – 9



- **Location – Nashik**
- **Factory Building**
- **5 MT crane**
- **12540 sq ft**
- **88 MT**

Project – 9



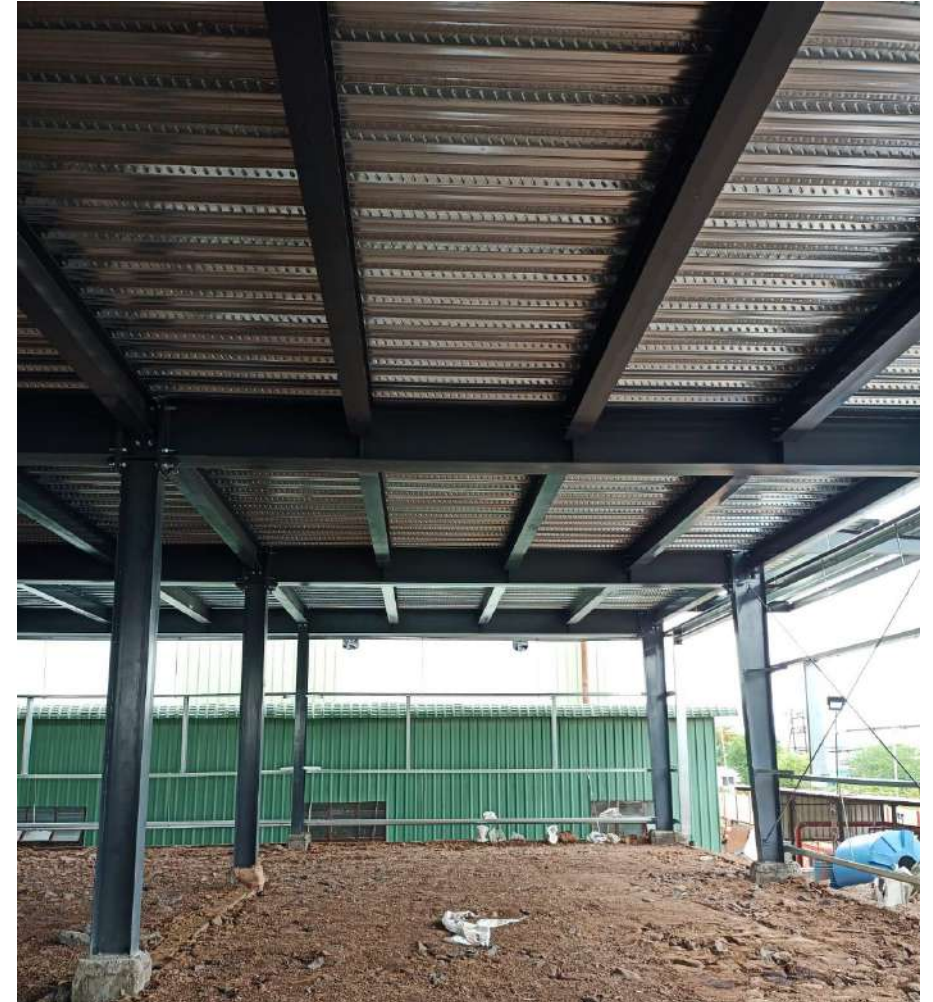
- **Location – Nashik**
- **Factory Building**
- **5 MT crane**
- **12540 sq ft**
- **88 MT**

Project - 10



- Location – Sinnar
- Factory Building - 16000 sq ft
- 96 MT

Project - 10



- Location – Sinnar
- Factory Building - 16000 sq ft
- 96 MT

Project - 11



- **Retrofitting – Sky light installation**
- **Location – Sinnar**
- **Factory Building - 36000 sq ft**
- **Job completed in 4 days**

Project - 11



- **Retrofitting – Sky light installation**
- **Location – Sinnar**
- **Factory Building - 36000 sq ft**
- **Job completed in 4 days**

Project - 12



- **Retrofitting – Roof replacement**
- **Location – Nashik**
- **Factory Building**
- **23000 sq ft**
- **Job completed in 8 days**

Project – 12



- **Retrofitting – Roof replacement**
- **Location – Nashik**
- **Factory Building**
- **23000 sq ft**
- **Job completed in 8 days**

Project – 13



- Roofing system for Office space on 25m high building
- Location – Nashik
- Office Space
- 2490 sq ft
- Job completed in 28 days

Project – 13



- Roofing system for Office space on 25m high building
- Location – Nashik
- Office Space
- 2490 sq ft
- Job completed in 28 days



Turnkey Solutions For

- ✓ Industrial Buildings
- ✓ Warehousing
- ✓ Cold Storages
- ✓ Showrooms
- ✓ Parkings & Garages
- ✓ Site Offices & Cabins
- ✓ Farmhouses
- ✓ Agricultural structures & Godowns

Reach Us @

☎ +91 77981 18041

✉ amey@valenceinfra.com
projects@valenceinfra.com

Thank You